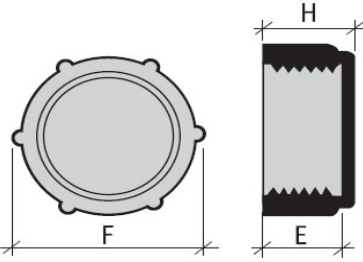
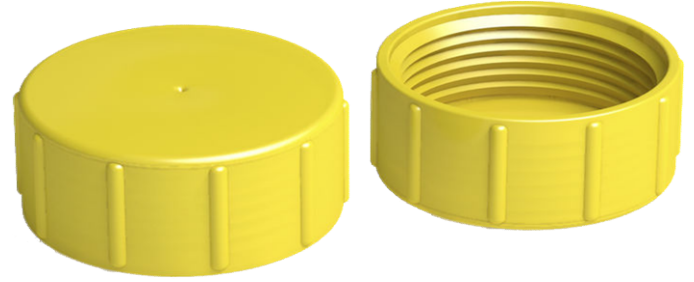



BRTF 0138
**Kısa Plastik Dişli Koruma Kapakları
Sarı YYPE**


Part Number	Thread Metric	Dimensions (mm)		
		E	F	H
9001000	M8 x 1	8.0	12.0	10.0
9002000	M10 x 1	10.0	15.0	12.0
9003000	M12 x 1	10.5	17.0	12.5
9004000	M12 x 1.5	10.5	17.5	12.5
9005000	M14 x 1.5	10.5	19.0	13.0
9006000	M16 x 1	8.1	22.0	11.0
9007000	M16 x 1.5	11.0	22.0	12.2
9008000	M18 x 1.5	10.5	24.5	13.0
9009000	M20 x 1.5	11.0	26.0	13.5
9010000	M22 x 1.5	12.0	28.0	14.0
9011000	M24 x 1.5	12.0	29.5	13.5
9012000	M25 x 1.5	12.0	31.0	13.5
9013000	M26 x 1.5	12.5	33.0	14.5
9014000	M27 x 1.5	13.0	34.0	15.0
9014100	M29 x 1.5	13.0	35.5	15.2
9015000	M30 x 1.5	13.0	36.0	15.0
9016000	M32 x 1.5	13.0	39.0	15.0
9017000	M36 x 1.5	14.5	42.5	16.0
9018000	M38 x 1.5	15.0	44.0	17.0
9019000	M40 x 1.5	15.0	46.0	17.0
9020000	M45 x 1.5	16.0	52.0	18.0
9021000	M50 x 1.5	17.0	57.0	18.5
9022000	M52 x 1.5	17.0	59.0	19.0
9023000	M55 x 1.5	17.0	61.0	18.5
9024000	M62 x 1.5	17.0	69.0	19.0
9025000	M27 x 2	13.0	34.0	14.5
9026000	M30 x 2	13.0	36.0	15.0
9027000	M30 x 2	30.0	36.0	31.5
9029000	M36 x 2	15.0	42.0	17.0
9029500	M40 x 2	15.5	46.2	16.7
9030000	M42 x 2	15.0	48.0	16.5
9031000	M45 x 2	15.0	51.0	16.5
9032000	M52 x 2	17.0	58.0	19.0

Part Number	Thread BSP GAS	Dimensions (mm)		
		E	F	H
9101000	1/8" x 28	10.0	15.0	13.0
9102000	1/4" x 19	11.0	19.0	12.5
9103000	3/8" x 19	11.5	23.0	12.5
9104000	1/2" x 14	12.0	27.0	13.5
9105000	5/8" x 14	12.5	29.0	14.0
9106000	3/4" x 14	14.5	34.0	15.0
9107000	7/8" x 14	15.5	38.0	17.0
9108000	1" x 11	18.0	40.0	20.0
9109000	1 1/4" x 11	23.5	49.0	25.0
9110000	1 1/4" x 11	16.0	48.0	18.0
9111000	1 1/2" x 11	27.0	55.0	28.0
9111500	1 3/4" x 11	26.0	59.0	27.5
9112000	2" x 11	26.5	67.0	28.5

Part Number	Thread UNF	Dimensions (mm)		
		E	F	H
9301000	1/2" x 20	12.5	20.0	14.5
9302000	9/16" x 18	13.0	21.0	15.0
9303000	5/8" x 18	16.5	21.0	18.0
9304000	11/16" x 16	16.5	24.0	19.0
9305000	11/16" x 16	8.5	23.0	10.0
9305500	13/16" x 16	20.0	27.0	22.0
9306000	3/4" x 16	17.0	25.0	19.0
9307000	7/8" x 14	18.0	29.0	20.0
9307500	15/16" x 16	20.0	30.0	22.0
9308000	1 1/16" x 12	21.0	32.0	23.0
9309000	1 3/16" x 12	21.0	36.5	23.0
9310000	1 3/8" x 12	14.0	41.0	16.0
9311000	1 1/2" x 12	20.0	44.5	22.5