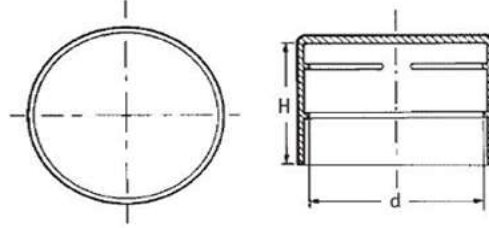
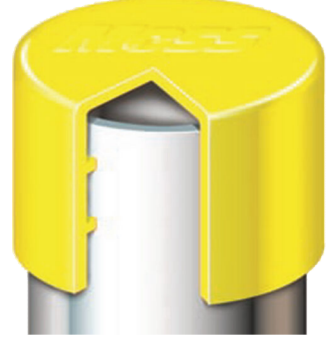




BRT 1481

**Standart Boru Boyutları için Kapaklar
Sarı AYPE**

Düşük maliyet ve yüksek kalite
İçerideki dişler sıkı oturmayı sağlar ve biriken basıncı boşaltır
Kod Sonunda X olanlarda havalandırma deliği vardır



Malzeme Sarı AYPE

Kod	Boru Boyutu	d	H
10286	DN 15 1/2"	21.3	20.0
43558X	DN 15 1/2"	21.3	20.0
10287	DN 20 3/4"	26.9	25.0
43559X	DN 20 3/4"	26.9	25.0
10288	DN 25 1"	33.7	30.0
43560X	DN 25 1"	33.7	30.0
10268X	DN 32 11/4"	42.4	28.0
10294	DN 32 11/4"	42.4	28.0
10269X	DN 40 11/2"	48.3	30.0
10295	DN 40 11/2"	48.3	30.0
10267X	DN 50 2"	60.3	30.0
10296	DN 50 2"	60.3	30.0
10266X	DN 65 21/2"	76.1	35.0
10298	DN 65 21/2"	76.1	35.0
199480	DN 80 3"	88.9	36.0
199481X	DN 80 3"	88.9	36.0
199482	DN 90 31/2"	101.6	40.0
199483X	DN 90 31/2"	101.6	40.0
199484	DN 100 4"	114.3	40.0
199485X	DN 100 4"	114.3	40.0
199486	DN 115 41/2"	127.0	40.0
199488	DN 125 5"	139.7	40.0

Kod	Boru Boyutu	d	H
199489X	DN 125 5"	139.7	40.0
199490	DN 140 51/2"	152.4	40.0
199492	DN 150 6"	168.3	40.0
199493X	DN 150 6"	168.3	40.0
199494	DN 200 8"	219.1	40.0
199495X	DN 200 8"	219.1	40.0
199496	DN 250 10"	273.0	45.0
199497X	DN 250 10"	273.0	45.0
199498	DN 300 12"	323.9	50.0
199499X	DN 300 12"	323.9	50.0
43970	DN 350 14"	355.6	57.0
43455X	DN 400 16"	406.4	60.5
43971	DN 400 16"	406.4	60.5
43972	DN 450 18"	457.2	63.0
43457X	DN 500 20"	508.0	65.0
43973	DN 500 20"	508.0	65.0
31710	DN 550 22"	558.8	115
43458X	DN 600 24"	609.6	67.0
43974	DN 600 24"	609.6	67.0
31713	DN 650 26"	660.4	135
31725		1219.2	200

Malzeme Siyah LDPE

Kod	Boru Boyutu	d	H
110284	DN 700 28"	711.2	120.0
110300	DN 700 28"	711.2	120.0
110285	DN 750 30"	762.0	120.0
110303	DN 750 30"	762.0	120.0
110286	DN 800 32"	812.8	120.0
110306	DN 800 32"	812.8	120.0
110287	DN 900 36"	914.4	150.0
110309	DN 900 36"	914.4	150.0

Malzeme Esnek PE

Kod	Boru Boyutu	d	H
34240	DN 850 34"	863.6	170
34244	DN 950 38"	965.2	180
31727	DN 1000 40"	1016.0	180
31731	DN 1050 42"	1066.8	185
42013X	DN 1050 42"	1066.8	185.0
34248	DN 1100 44"	1117.8	185
34252	DN 1400 56"	1422.4	215
34254	DN 1500 60"	1524.0	220
34256	DN 1600 64"	1625.6	230