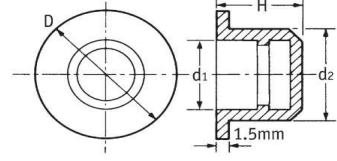



BRT 1136

Parçalanmaya karşı yüksek dirençli
Yeşil vinil, yağ ve gresler ile birlikte kullanılabilir.

Geniş Flanşlı Tapa
Malzeme Siyah PVC veya Yeşil Vinil


Yeşil Vinil

Kod	d1	d2	D	H
11806	3.1	6.0	12.0	12.0
11807	7.2	10.0	16.0	12.0
11808	4.9	8.0	14.0	12.0
11809	9.2	12.0	20.0	12.0
11810	21.6	24.0	34.0	16.0
11811	14.0	17.0	27.0	14.0
11812	17.2	20.0	30.0	14.0
11813	11.0	14.0	22.0	14.0
11814	20.1	23.0	33.0	14.0
11816	22.2	25.0	35.0	16.0
11817	4.5	7.0	13.0	12.0
11818	16.1	19.0	29.0	14.0
11819	23.5	26.0	36.0	16.0
11820	12.9	16.0	24.0	14.0
11821	23.6	27.0	37.0	16.0
11822	10.2	13.0	21.0	14.0
11823	18.0	21.0	31.0	14.0
11824	8.2	11.0	17.0	12.0
11825	25.2	28.0	38.0	16.0
11826	27.9	30.0	40.0	16.0
11827	15.0	18.0	28.0	14.0
11828	19.0	22.0	32.0	14.0
11829	6.1	9.0	15.0	12.0
11830	12.2	15.0	23.0	14.0
12078	36.4	40.0	50.0	22.0

Siyah PVC

Kod	d1	d2	D	H
10874	1.6	3.2	7.0	9.0
12665	3.2	5.0	11.0	12.0
12666	3.1	6.0	12.0	12.0
12667	4.5	7.0	13.0	12.0
12668	4.9	8.0	14.0	12.0
12669	6.1	9.0	15.0	12.0
12670	7.2	10.0	16.0	12.0
12671	8.2	11.0	17.0	12.0
12672	9.2	12.0	20.0	12.0
12673	10.2	13.0	21.0	14.0
12674	11.0	14.0	22.0	14.0
12675	12.2	15.0	23.0	14.0
12677	12.9	16.0	24.0	14.0
12678	14.0	17.0	27.0	14.0
12679	15.0	18.0	28.0	14.0
12680	16.1	19.0	29.0	14.0
12681	17.2	20.0	30.0	14.0
12683	18.0	21.0	31.0	14.0
12684	19.0	22.0	32.0	14.0
12685	20.1	23.0	33.0	14.0
12686	21.6	24.0	34.0	16.0
12687	22.2	25.0	35.0	16.0
12688	23.5	26.0	36.0	16.0
12689	23.6	27.0	37.0	16.0
12690	25.2	28.0	38.0	16.0
12692	27.9	30.0	40.0	16.0
12693	36.4	40.0	50.0	22.0
12694	43.2	47.0	57.0	22.0